



Real Time Screen Capture Software User Manual

V1.0.3

Hangzhou Daxun Digital Technology Co.,Ltd
www.daxunview.com



Foreword

General

This user's manual (hereinafter referred to be the Manual) introduces the functions and operations of the real time screen capture software.

Privacy Protection Notice

Using Daxun SCS, you might collect personal data of computer screen information. You need to be in compliance with the local privacy protection laws and regulations to protect the legitimate rights and interests of other people by implementing measures including but not limited to: providing clear and visible identification to inform data subject the existence of surveillance area and providing related contact.

About the Manual

- The manual is for reference only. If there is inconsistency between the manual and the actual product, the actual product shall prevail.
- We are not liable for any loss caused by the operations that do not comply with the manual.
- The manual would be updated according to the latest laws and regulations of related regions. For detailed information, see the paper manual, CD-ROM, QR code or our official website. If there is inconsistency between paper manual and the electronic version, the electronic version shall prevail.
- All the designs and software are subject to change without prior written notice. The product updates might cause some differences between the actual product and the manual. Please contact the customer service for the latest program and supplementary documentation.
- There still might be deviation in technical data, functions and operations description, or errors in print. If there is any doubt or dispute, please refer to our final explanation.
- Upgrade the reader software or try other mainstream reader software if the manual (in PDF format) cannot be opened.
- All trademarks, registered trademarks and the company names in the manual are the properties of their respective owners.
- Please visit our website, contact the supplier or customer service if there is any problem occurred when using the device.
- If there is any uncertainty or controversy, please refer to our final explanation



Table of Contents

1. Overview	4
1.1 Product Overview	4
1.2 Features	4
2. Installation and Deployment	5
2.1 SCS Computer Configuration Requirement	5
2.2 Installing Program	5
3. Start SCS	8
4. SCS Configuration	9
4.1 Change Language	9
4.2 Port Setup	10
4.3 Registration	11
4.4 About	12
4.5 Exit System	13
5. Access to the real time video	13



1. Overview

1.1 Product Overview

Daxun SCS is a real time screen capture software for windows which enables users to real time capture their PC screen, then convert into RTSP stream output for various uses. For example, it can cast the computer screen on the video wall. Or it can be used as IP camera to output RTSP stream of PC screen on surveillance software platform. Or it can be used as computer screen monitoring software. Boss can real time monitor what his employees are doing on the PC screen etc. It integrates data collection, encoding and pushing stream services in one software, has characteristics of low delay, high efficiency and low packet loss.

1.2 Features

- Operation System: Windows 7 or above.
- Real time screen capture (if there is an audio on computer, it can collect data of audio too.), encode and convert into RTSP stream.
- Auto adapt to monitor's display resolution. When screen capturing, the software allows users to set their monitor's resolution.
- Output: RTSP stream.
- Frame rate: 25fps or 30fps.
- Encoding: H.264/MPEG4.
- High stability, low packet loss and low delay.

2. Installation and Deployment

2.1 SCS Computer Configuration Requirement

Please refer to table 2-1 for the requirements of computer config.

SCS Computer Configuration Requirement	
Recommended configuration	CPU: 2-Core, 4-Thread+ RAM: 8G Ethernet Port :1 Port@1000Mbps
Minimum configuration	CPU: Single Core,2-Thread RAM:2G Ethernet Port: 1 Port@1000Mbps
Windows System	Win7-32/64bit, Win10-32/64bit,Windows Server 2008, Windows Server 2012, Windows Server 2016 , Windows Server 2019.

Table 2-1 SCS computer configuration requirement

2.2 Installing Program

Note:

- Make sure you have acquired program before installation, otherwise please contact technical support for the latest program.
- Program name includes version number and date, please check before installation.

Step 1: Double-click installer. 

The language selection interface is displayed. See Figure 2-2.

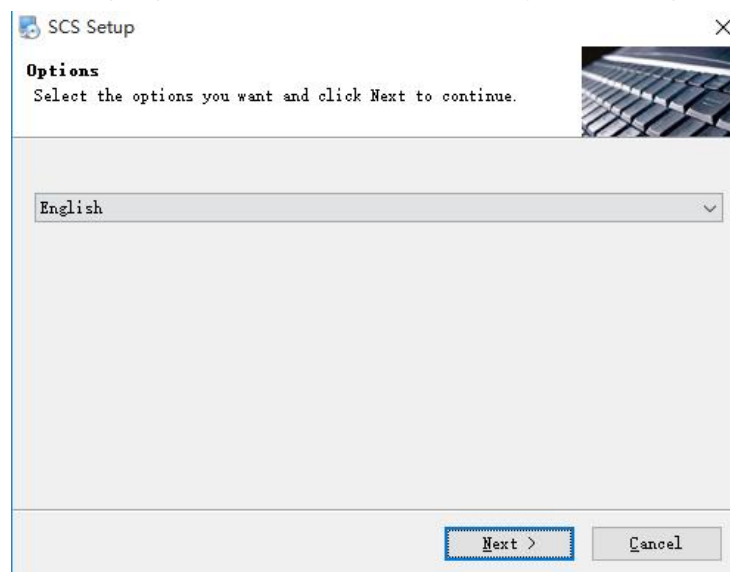


Figure 2-2 Language selection interface.

Step 2: Select **English** language, click **Next**. See Figure 2-3.

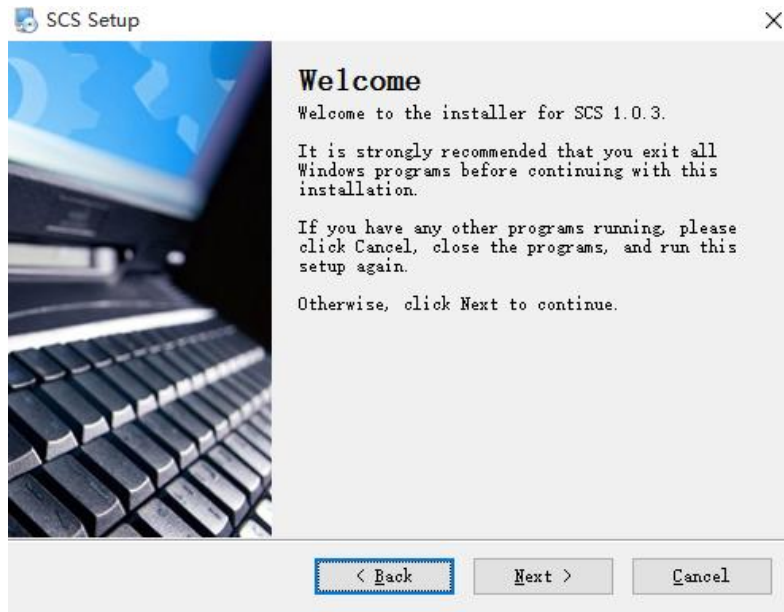


Figure 2-3 Welcome interface.

Step 3: Click Next. The installation patch interface is displayed. See Figure 2-4.

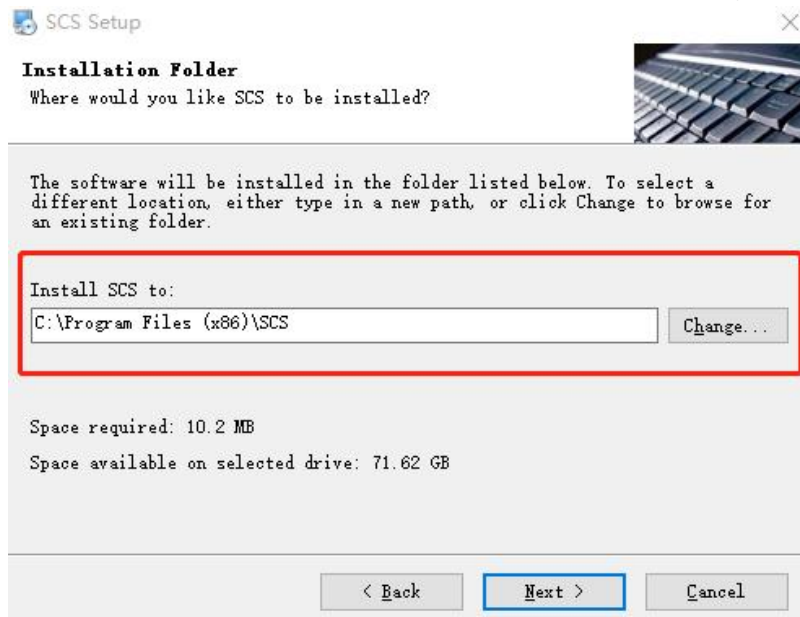


Figure 2-4 Select installation path

Step 4: Click **Change** and select installation patch, click **Next**. See Figure 2-5.

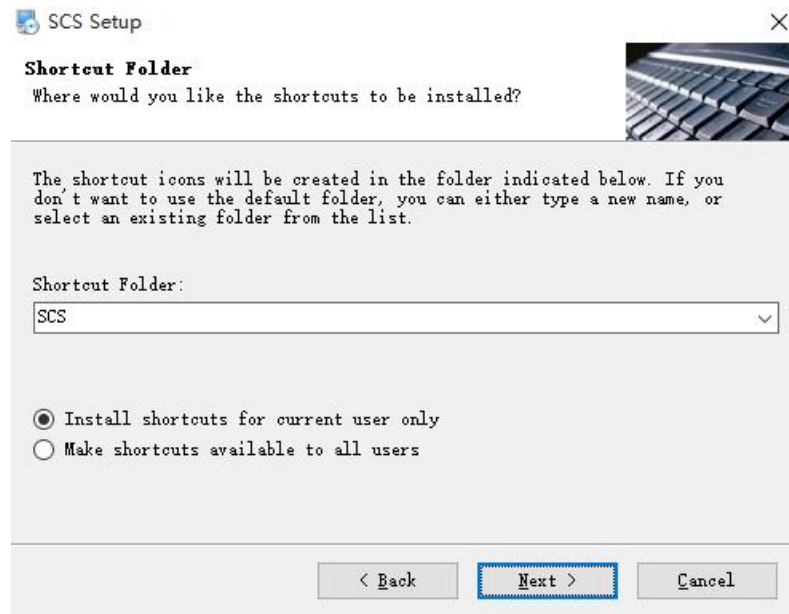


Figure 2-5 Folder selection.

Step 5: Select shortcut folder and choose whether to make SCS shortcut available to current user or to all users. Then click **Next**. See Figure 2-6.

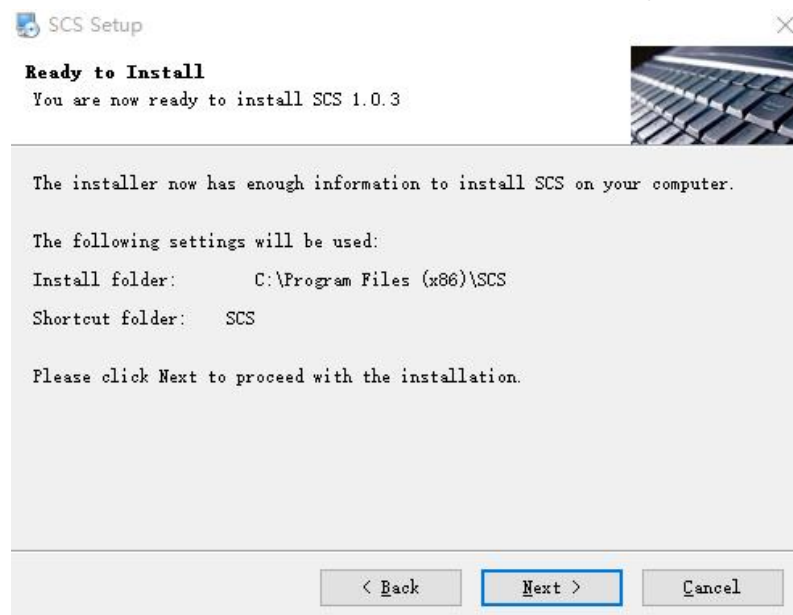


Figure 2-6 Ready to install interface

Step 6: Click Next to install. The system displays installation progress, the whole installation needs few seconds. Click **Finish** to complete installation. See Figure 2-7.

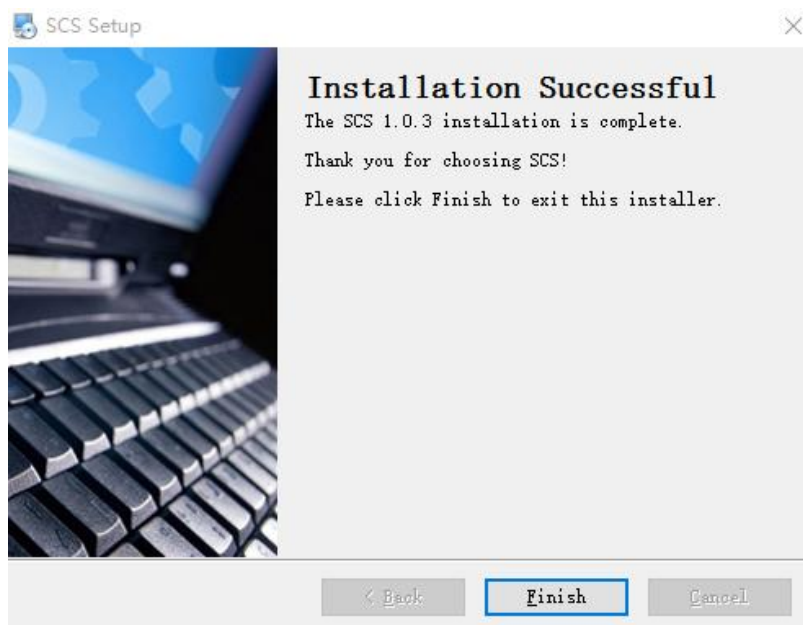


Figure 2-7 Installation successful Interface

3. Start SCS



Double click shortcut  on the computer desktop to run SCS system. Or you can right click shortcut , then select **Run as administrator** to run SCS system. See Figure 3-1.



Figure 3-1 Software starting interface.

After the software is fully running, there is no interface displayed. Its service icon will display on the task bar in the lower right corner of the operation system, indicating that it is running normally. See Figure 3-2.



Figure 3-2 SCS service icon.

4. SCS Configuration

4.1 Change Language

SCS supports English, simplified Chinese and Chinese traditional language. User can switch the language as he needs.

Step 1: Right click SCS service icon  on the task bar in the lower right corner of desktop to select **Change Language**. See Figure 4-1.

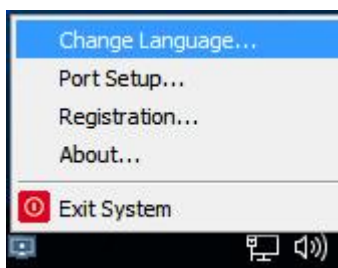


Figure 4-1 Right-click change language menu.

Step 2: Select language you need, then click OK to confirm the selection. See Figure 4-2.

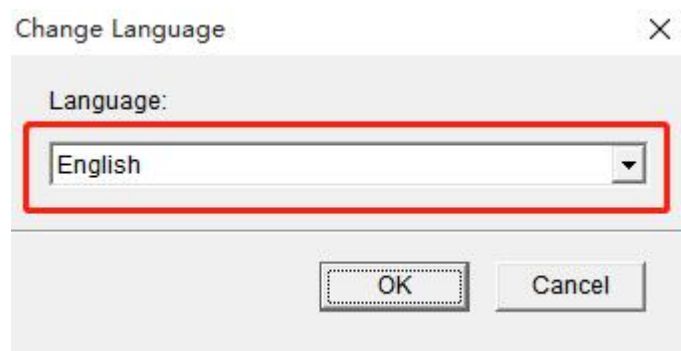



Figure 4-2 Change language interface.

4.2 Port Setup

The SCS port number is 6554 by default. User can modify the port according to the following steps.

Step 1: Right click SCS service icon  on the task bar in the lower right corner of desktop to select **Port Setup**. See Figure 4-3.

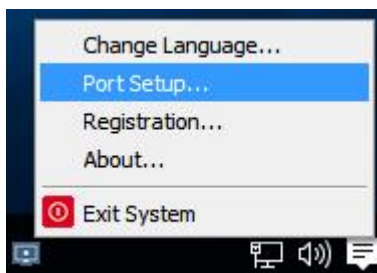


Figure 4-3 Right-click port setup menu.

Step 2: Input the port number. Please make sure the new port is available and does not conflict with others. See Figure 4-4.



Figure 4-4 Port setup interface

Note: After modifying the port, its access address will be changed too. For example, the original access address is:

rtsp://192.168.0.134:6554.

After modifying the port to 7554, its access address will become

rtsp://192.168.0.134:7554.

4.3 Registration

Note: Unregistered SCS will log out system automatically after running for two hours. Please contact technical support or sales person to get the SCS license before using.

The registration steps are as below:

Step 1: Input **cmd** in the left “Search the web and Windows” of windows task bar to find “**Command Prompt**” program. Right click “Command Prompt” to select menu “**Run as administrator**” to run this program. See Figure 4-5.

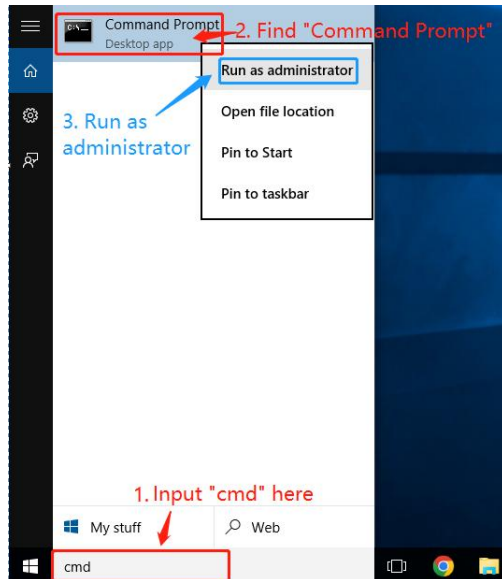



Figure 4-5 Find command prompt

Input “`getmac >>c:\mac.txt`” in the program, then press “enter” key on the keyboard. See Figure 4-6.



Figure 4-6 Generate mac.txt

Step 2: Find “`mac.txt`” file in C disk of computer, then send it to us. We will generate a license file named “`scs_xxx.lic`” based on this mac address, and send it back to user.

Step 3: Right click SCS service icon  on the task bar in the lower right corner of desktop to select **Registration**. See Figure 4-7.

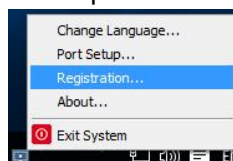



Figure 7-7 Right-click registration menu

Step 4: Click Import License button to import “scs_xxx.lic” license file, then click Activate button to activate this software system. See Figure 4-8. In this way, the registration is complete.



Figure 4-8 Import license interface

4.4 About

Step 1: Right click SCS service icon  on the task bar in the lower right corner of desktop to select **About**. See Figure 4-9.

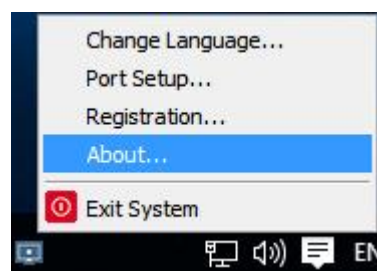


Figure 4-9 Right-click about menu

Step 2: User can view the information about this program. See Figure 4-10.



Figure 4-10 About interface

4.5 Exit System


Right click SCS service icon  on the task bar in the lower right corner of desktop, select **Exit System** to log out the software . See Figure 4-11.



Figure 4-11 Right-click exit system menu

5. Access to the real time video

After running SCS program, it will real time capture the computer screen, then convert into RTSP stream output automatically, which can be used for various applications. For example, it can cast the computer screen on the video wall. Or it can be used as IP camera to output RTSP stream of PC screen on surveillance software platform. Or it can be used as computer screen monitoring software. Boss can real time monitor what his employees are doing on the PC screen etc.

The rule of the video steam address is: `rtsp://IP:port`.

- IP : IP address of this computer which is running SCS program.
- Port: SCS service port. The SCS port number is 6554 by default. For more details, please refer to “**4.2 Port Setup**”.

Set VLC media player as an example.

Step 1: Open VLC media player.

Step 2: Click **Media**, then click **Open Network Stream**. See Figure 5-1

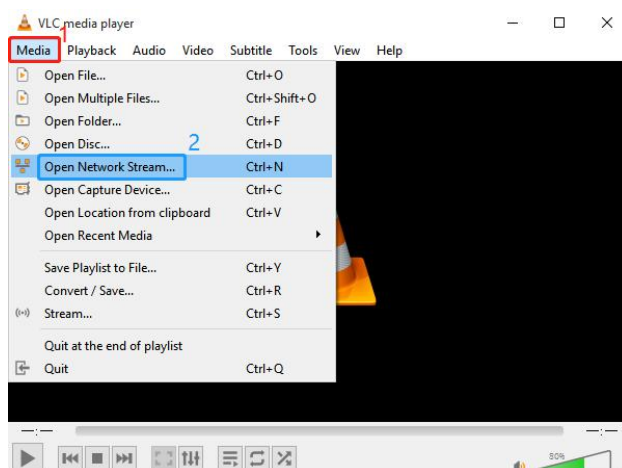


Figure 5-1 VLC media menu



Step 3: Input RTSP stream address on VLC open network steam interface. See Figure 5-2

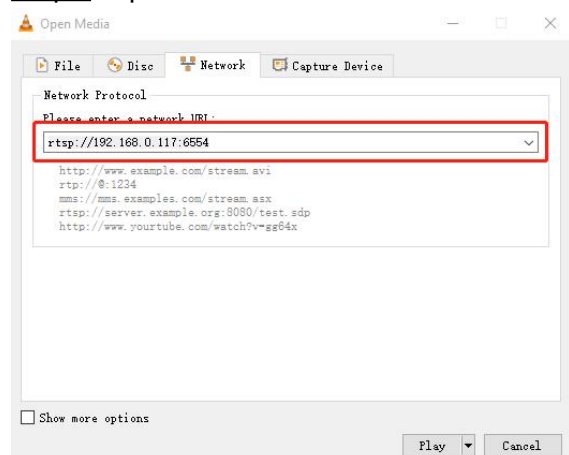


Figure 5-2 VLC open network steam interface

Step 4 : User can see the real time operation on the computer screen by VLC player here. See Figure5-3.

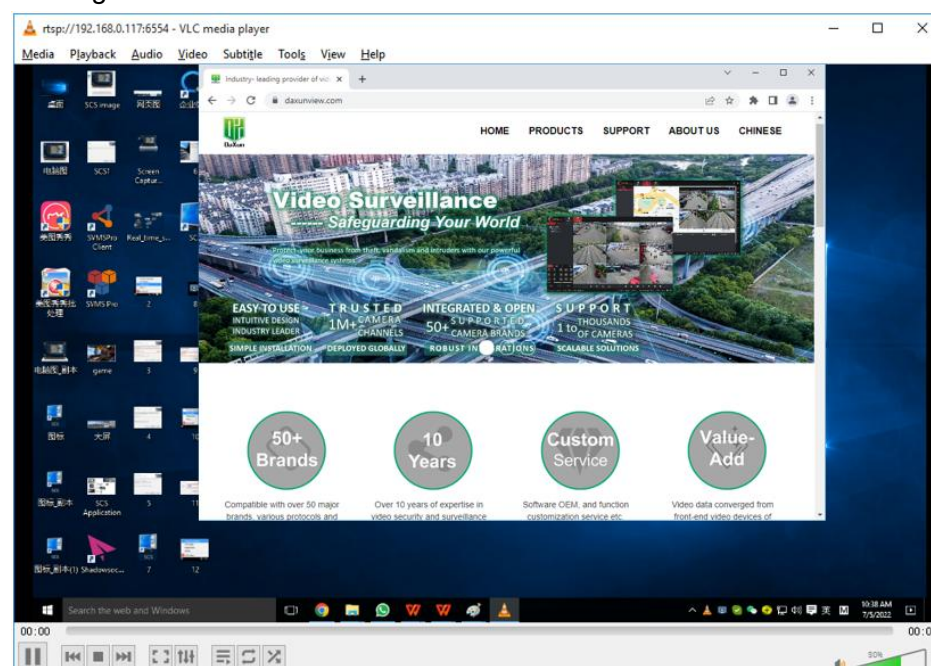


Figure 5-3 VLC media player